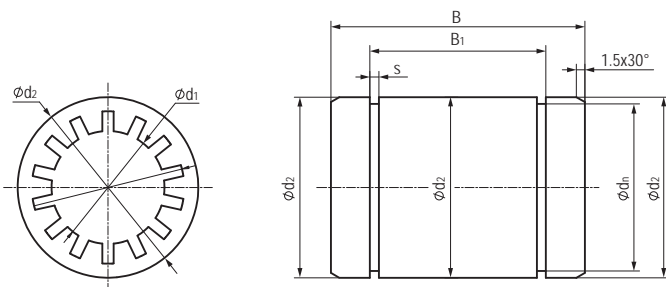


LIN-01 全塑料直线轴承 Plastic linear bearings



- MR4材料制成
- 易用手直接装配
- 卡簧轴向固定
- 较小的配合间隙
- 适用于污垢或灰尘环境
- 低成本方案
- 使用温度 -20℃/+60℃
- Made of material MR4
- Easy assembly by hand
- Axial secured by circlips
- Reduced bearing clearance
- Unaffected by dirt and dust
- Low cost
- Operation temperature -20℃/+60℃

标准规格 Standard specifications



产品编码 Part No.:

LIN-01-06-MR4

材料 Material: MR4

轴承内径 Inner diameter

LIN-01 系列直线轴承
LIN-01 standard bearings

座孔 Housing: H7 轴 Shaft: h6-h9

产品编码 Part No.	d_1 [mm]	公差 Tolerance [mm]	d_2 [mm]	B [mm]	B_1 [mm]	s [mm]	d_n [mm]
LIN-01-06-MR4	6	0/+0.03	12	19	13.5	1.1	11.5
LIN-01-08-MR4	8	0/+0.04	16	25	16.2	1.1	15.2
LIN-01-10-MR4	10	0/+0.04	19	29	21.6	1.3	17.5
LIN-01-12-MR4	12	0/+0.04	22	32	22.6	1.3	20.5
LIN-01-16-MR4	16	0/+0.04	26	36	24.6	1.3	24.2
LIN-01-20-MR4	20	0/+0.04	32	45	31.2	1.6	29.6
LIN-01-25-MR4	25	0/+0.05	40	58	43.7	1.85	36.5
LIN-01-30-MR4	30	0/+0.05	47	68	51.7	1.85	43.5

产品编码 Part No.	轴径 Shaft [mm]	座孔 Housing [mm]	公差 Tolerance [mm]	F max. [N] 最大动载荷 Dynamic Load P=2.5MPa	F max. [N] 最大静载荷 Static Load P=17.5MPa	重量 Weight [g]
LIN-01-06-MR4	6	12	0/+0.018	200	1400	2
LIN-01-08-MR4	8	16	0/+0.018	250	1750	4
LIN-01-10-MR4	10	19	0/+0.021	363	2538	7
LIN-01-12-MR4	12	22	0/+0.021	480	3360	9
LIN-01-16-MR4	16	26	0/+0.021	720	5040	13
LIN-01-20-MR4	20	32	0/+0.025	1125	7875	24
LIN-01-25-MR4	25	40	0/+0.025	1813	12688	47
LIN-01-30-MR4	30	47	0/+0.025	2550	17850	72